

Stealth *pedals*

USB Audio Interface/MIDI Controller + Modeling Software



User Manual

IK Multimedia. Musicians First.



PLEASE NOTE

StealthPedal™ and AmpliTube® are trademarks or registered trademarks property of IK Multimedia Production. All other product names and trademarks are the property of their respective owners, which are in no way associated or affiliated with IK Multimedia.

StealthPedal™ CS

Table of Contents

I	Contents	3
II	License Agreement	4
Chapter 1	Introduction	7
1.1	Package Contents	7
1.2	StealthPedal Package Components	7
1.3	How to Use StealthPedal Safely	8
1.4	Electromagnetic Compatibility	8
1.5	Declaration of Conformity	9
1.6	Limited Warranty	9
Chapter 2	Getting Started With StealthPedal	15
2.1	StealthPedal Layout and Connections	15
2.2	StealthPedal Software Installation Introduction	16
2.3	AmpliTube and StealthPedal System Drivers Installation	16
2.7	StealthPedal Power On Check	18
2.8	The StealthPedal System Structure	19
2.9	Windows Control Panel	20
2.10	Mac Control Panel	21
2.11	StealthPedal Control Assignment	22
2.12	Playing StealthPedal For The First Time With AmpliTube	23
Chapter 3	Typical StealthPedal Setups and Connections	25
3.1	Using StealthPedal in a Home Studio	26
3.2	Using StealthPedal On-stage Direct to The PA System	28
3.3	Using StealthPedal On-stage With One or More Guitar Cabinets	30
3.4	Connecting External Expression Pedal and Double Footswitch	32
Chapter 4	Technical Specifications	37

License Agreement

END-USER LICENSE AGREEMENT FOR IK MULTIMEDIA PRODUCT

Please read this document carefully before breaking the seal on the media package. This agreement licenses the enclosed software to you and contains warranty and liability disclaimers.

By breaking the seal on the media envelope, you are confirming to have taken notice of terms and conditions of this agreement and you acknowledge your acceptance of the software as well as your acceptance of the terms of this agreement. If you do not wish to do so, do not break the seal. Instead, promptly return the entire package, including the unopened media package, to the dealer from whom you have obtained it, for a full refund.

1) DEFINITIONS

"EULA" means this end user license agreement

"IK Multimedia Product" means the software program included in the enclosed package, and all related updates supplied by IK Multimedia.

"IK Multimedia Product" means the software program and hardware (if any) included in the enclosed package, the related documentation, models, multimedia content (such as animation, sound and graphics) and all related updates supplied by IK Multimedia.

"Not for resale (NFR) Version" means a version of IK Multimedia Product, so identified, is intended for review and evaluation purposes, only.

2) LICENSE

The "IK Multimedia Product" is protected by copyright laws and international copyright treaties, as well as other intellectual property laws and treaties. The "IK Multimedia Product" is licensed, not sold. This EULA grants you the rights as specified here below. All other actions and means of usage are reserved to the written permission of the right holder IK Multimedia Production Srl:

Applications Software. The "IK Multimedia Product" may be used only by you. You may install and use the "IK Multimedia Product", or any prior version thereof for the same operating system, on up to five (5) computers, provided that (a) each computer is owned by (or leased to) and under the exclusive control of the licensee; (b) the program(s) shall NOT be used simultaneously on more than one machine, and (c) any computer(s) with IK Multimedia software installed shall not be sold, rented, leased, loaned or otherwise be removed from the licensee's possession without first removing (uninstalling) the licensed software, except as provided in Paragraph 4 (below) pertaining to "Software Transfer".

Storage/Network use. You may also store or install a copy of the "IK Multimedia Product" on a storage device, such as a network server, used only to install or run the "IK Multimedia Product" on your other computers over an internal network; however, you must acquire and dedicate a distinct license for each user of the "IK Multimedia Product" from the storage device. Any given license for the "IK Multimedia Product" may not be shared or used concurrently or otherwise on different computers or by different developers in a given organization.

3) AUTHORIZATION

The "IK Multimedia Product" only functions when you have authorized it. The "IK Multimedia Product" will be authorized upon completing the authorization procedure. Once your product is authorized, you may use it.

You agree to follow the authorization procedure and will provide true, accurate and complete information about yourself. If you provide any information that is untrue, inaccurate, not correct or incomplete, or IK Multimedia has reasonable grounds to suspect that such information is untrue, inaccurate, not correct or incomplete, IK Multimedia has the right to suspend or to revoke the license.

The termination of the license shall be without prejudice to any rights, whatsoever, of IK Multimedia.

4) DESCRIPTION OF OTHER RIGHTS AND LIMITATIONS

Limitations on Reverse Engineering, Decompilation, and Disassembly. You may not reverse engineer, decompile, or disassemble the "IK Multimedia Product", except and only to the extent that such activity is expressly permitted by applicable law notwithstanding this limitation of components. The "IK Multimedia Product" is licensed as a single product. Its component parts may not be separated for use on more than one computer.

Not for Resale Version. If the "IK Multimedia Product" is labeled "Not for Resale" or "NFR" or "Evaluation Copy", then, notwithstanding other sections of this EULA, you may not sell, or otherwise transfer the "IK Multimedia Product".

Rental. You may not rent, lease, or lend the "IK Multimedia Product" to any party.

Software Transfer. You may not transfer, license or sublicense your rights as licensee of the software or any IK Multimedia product, as licensed to you under this agreement without prior written consent of the rights owner. The carrier on which the IK Multimedia product has been distributed may be transferred or otherwise made available to any third party only with the prior written consent of the rights owner and provided that (a) the original media

and license(s) accompany the carrier and (b) the party transferring the media does not retain a copy of the media.

5) UPGRADES

If the "IK Multimedia Product" is labeled or otherwise identified by IK Multimedia as an "upgrade", you must be properly licensed to use a product identified by IK Multimedia as being eligible for the upgrade in order to use the "IK Multimedia Product".

An "IK Multimedia Product" labeled or otherwise identified by IK Multimedia as an upgrade replaces and/or supplements the product that formed the basis for your eligibility for such upgrade. You may use the resulting upgraded product only in accordance with the terms of this EULA. If the "IK Multimedia Product" is an upgrade of a component of a package of software programs that you licensed as a single product, the "IK Multimedia Product" may be used and transferred only as part of that single product package and may not be separated for use on more than one computer.

6) DUAL-MEDIA SOFTWARE

You may receive the "IK Multimedia Product" in more than one medium. You may not loan, rent, lease, or otherwise transfer the other medium to another user, except as part of the permanent transfer (as provided above) of the "IK Multimedia Product".

7) LIMITED WARRANTY

IK Multimedia warrants to the original purchaser of the computer software product, for a period of ninety (90) days following the date of original purchase, that under normal use, the software program and the user documentation are free from defects that will materially interfere with the operation of the program as described in the enclosed user documentation.

8) WARRANTY CLAIMS

To make a warranty claim under the above limited warranty, please return the product to the point of purchase, accompanied by proof of purchase, your name, your return address and a statement of the defect, or send the CD(s) to us at the below address within ninety (90) days of purchase. Include a copy of the dated purchase receipt, your name, your return address and a statement of the defect. IK Multimedia or its authorized dealer will use reasonable commercial efforts to repair or replace the product and return it to you (postage prepaid) or issue to you a credit equal to the purchase price, at its option.

9) LIMITATIONS ON WARRANTY

IK Multimedia warrants only that the program will perform as described in the user documentation. No other advertising, description or representation, whether made by a IK Multimedia dealer, distributor, agent or employee, shall be binding upon IK Multimedia or shall change the terms of this warranty.

EXCEPT AS STATED ABOVE, IK MULTIMEDIA MAKES NO OTHER WARRANTY, EXPRESSED OR IMPLIED, REGARDING THIS PRODUCT. IK MULTIMEDIA DISCLAIMS ANY WARRANTY THAT THE SOFTWARE IS FIT FOR A PARTICULAR PURPOSE, AND ANY IMPLIED WARRANTY OF MERCHANTABILITY SHALL BE LIMITED TO A NINETY (90) DAY DURATION OF THIS LIMITED EXPRESS WARRANTY AND IS OTHERWISE EXPRESSLY AND SPECIFICALLY DISCLAIMED. IK MULTIMEDIA SHALL NOT BE LIABLE FOR SPECIAL, INCIDENTAL, CONSEQUENTIAL OR OTHER DAMAGES, EVEN IF IK MULTIMEDIA IS ADVISED OF OR AWARE OF THE POSSIBILITY OF SUCH DAMAGES. THIS MEANS THAT IK MULTIMEDIA PRODUCTION SRL SHALL NOT BE RESPONSIBLE OR LIABLE FOR THE LOSS OF PROFITS OR REVENUES, OR FOR DAMAGES OR COSTS AS A RESULT OF LOSS OF TIME, DATA OR USE OF THE SOFTWARE, OR FROM ANY OTHER CAUSE EXCEPT THE ACTUAL COST OF THE PRODUCT. IN NO EVENT SHALL IK MULTIMEDIA LIABILITY EXCEED THE PURCHASE PRICE OF THIS PRODUCT.

10) CHOICE OF LAW

You agree that any and all claims, suits or other disputes arising from your use of the software shall be determined in accordance with the laws of Italy, in the event IK Multimedia, is made a party thereto. You agree to submit to the jurisdiction of the court in Modena, Italy for all actions, whether in contract or in tort, arising from your use or purchase of the software.

11) GENERAL

This Agreement contains the complete agreement between the parties with respect to the subject matter hereof, and supersedes all prior or contemporaneous agreements or understandings, whether oral or written. All questions concerning this Agreement shall be directed to:

IK Multimedia Production Srl
Via dell'Industria 46
41122 Modena
Italy

© 2009-2011 IK Multimedia. All rights reserved.

StealthPedal™ CS

Chapter 1 Introduction

Thank you for purchasing StealthPedal™. StealthPedal is the first USB-powered guitar audio interface/software controller in a compact wah-style pedal, allowing users to record, play and control the included “Powered by Amplitube” software, or any other MIDI controllable software, with the same feel and ease of use as a traditional guitar pedal. With StealthPedal, you can control your software from your feet, connect your instruments to the high-quality audio inputs, output to your speakers, mixer, guitar or PA amplifier. Never before has this level of quality or control been offered in such a rugged or compact package.

1.1 Package Contents

IMPORTANT: check that the StealthPedal package you received contains the following items:

- StealthPedal unit
- USB cable (3m)
- Software Installation disc and Registration Card
- Installation Manual of included software products
- Limited Warranty Envelope

1.2 StealthPedal Package Components

StealthPedal

This is the core of your StealthPedal system. StealthPedal is a high quality floor USB controller and audio interface specially designed to work with “Powered by AmpliTube” products, and can also function as a generic Audio Interface and MIDI controller.

USB cable (3m)

This cable connects StealthPedal to your host computer. While IK Multimedia supplies you with a cable of the highest quality, please make sure to always handle this cable with care, do not walk over it and never stress it by applying high forces in any of its points.

Software Installation disc and Registration Card

StealthPedal is a system that works in combination with a host computer and a powerful range of IK Multimedia software. This disc contains all the software required to operate StealthPedal.

Installation Manual of included software products

Installation Manuals for all software packages supplied with StealthPedal.

Limited Warranty Envelope

A pre-printed envelope explaining the warranty that accompanies the product.

1.3 How to Use StealthPedal Safely

- Avoid using the StealthPedal in the following locations to prevent possible damage: in extremely cold or hot locations or locations exposed to high humidity or excessive dust.
- Do not apply excessive force to jacks, switches and volume knob.
- Care should be taken that objects do not fall on the enclosure and liquids are not spilled into the enclosure.
- Never open the case and tamper with the internal circuits. No serviceable parts inside.
- Always use a dry, soft cloth to wipe off dust and dirt. Never use liquids or chemicals for cleaning.
- When the StealthPedal is not being used, disconnect and store it in a safe place.

1.4 Electromagnetic Compatibility

For EU Countries

This product complies with the requirements of the European Electromagnetic Compatibility (EMC) Directive 2004/108/EC.

For the USA

FEDERAL COMMUNICATIONS COMMISSION RADIO FREQUENCY INTERFERENCE STATEMENT

NOTE: This equipment has been tested and found to comply with the limits for a Class B digital device, pursuant to Part 15 of the FCC Rules. These limits are designed to provide reasonable protection against harmful interference in a residential installation. This equipment generates, uses and can radiate radio frequency energy and, if not installed and used in accordance with the instructions, may cause harmful interference to radio communications. However, there is no guarantee that interference will not occur in a particular installation. If this equipment does cause harmful interference to radio or television reception, which can be determined by turning the equipment off and on, the user is encouraged to try to correct the interference by one or more of the following measures:

- Reorient or relocate the receiving antenna.
- Increase the separation between the equipment and receiver.
- Connect the equipment into an outlet on a circuit different from that to which the receiver is connected.
- Consult the dealer or an experienced radio/TV technician for help.

This device complies with Part 15 of the FCC Rules. Operation is subject to the following two conditions:

1. This device may not cause harmful interference, and
2. This device must accept any interference received, including interference that may cause undesired operation.

Unauthorized changes or modification to this system can void the user's

authority to operate this equipment. This equipment requires shielded interface cables in order to meet FCC class B Limit.

For Canada

NOTICE: This Class B digital apparatus complies with the Canadian Interference-Causing Equipment Regulations ICES-003.

AVIS: Cet appareil numérique de classe B est conforme à la norme NMB-003 du Règlement sur le matériel brouilleur du Canada.

1.5 Declaration of Conformity

IK Multimedia Production Srl, hereby declares on own responsibility that the product:

Model Name: StealthPedal
Model Number: IK000007

has been tested and found to comply with the following standards:

EN55022:2006, EN 55024:1998,
FCC/CFR47 Part 15B:2008,
ICES-003 Issue 4,
AS/NZS CISPR 22:2006,
VCCI:2006.

Trade Name: IK Multimedia
Responsible Party: IK Multimedia Production Srl
Address: Via dell'Industria 46, 41122 Modena, ITALY
Telephone: +39 059 285496
Issue Date: 21 April, 2009

1.6 Limited Warranty

StealthPedal is designed and built with extreme care to provide you years of trouble-free operation. Should any problem arise, please read the terms of this warranty carefully. If you have any questions, please call our numbers below.

Terms and Conditions

IK Multimedia warrants to the first purchaser from an authorized dealer/ reseller that this product will be free from defects in materials and/or workmanship and that will function in accordance with the product specifications for a period of one (1) year from the date of purchase. You must register your IK product within fifteen (15) days of purchase.

Warranty Period

One Year Warranty PARTS, ninety (90) days Warranty LABOR.

During the 90 days period from the date of purchase, IK Multimedia will repair or replace this product at its sole discretion free of charge for PARTS and LABOR. After the initial 90 days period, IK Multimedia will repair or replace the PARTS free of charge, but there will be a charge for LABOR (fees to be determined according to the problem's characteristics).

This warranty does not apply to damage to this product that occurred as a result of abuse or misuse, abnormal service or handling, accidental damage or exposure to extremes in temperature or relative humidity, improper installation, damage which may have been caused either directly or indirectly by another product, improper care, or if the product has been altered or modified in any way, or if the damage was caused by repairs or service provided by an unauthorized center.

To exercise your rights under this warranty, you should contact the numbers below to obtain a Return Authorization (RA) number. After you have obtained a RA, complete the Product Return Form and ship this product in the original (or in an appropriate) packaging at your expense (insurance is recommended), together with proof of purchase (copy), to one of the addresses below. Please read the Service Policy section of this document carefully.

THIS WARRANTY IS IN LIEU OF ALL WARRANTIES, WHETHER ORAL OR WRITTEN, EXPRESS, IMPLIED OR STATUTORY. IK MULTIMEDIA MAKES NO OTHER WARRANTY, EITHER EXPRESS OR IMPLIED, INCLUDING, WITHOUT LIMITATION, ANY IMPLIED WARRANTIES OF MERCHANTABILITY, FITNESS FOR A PARTICULAR PURPOSE, OR NON-INFRINGEMENT. PURCHASER'S SOLE AND EXCLUSIVE REMEDY UNDER THIS WARRANTY SHALL BE REPAIR OR REPLACEMENT, OR A REFUND OF THE PURCHASE PRICE PAID, AS SPECIFIED HEREIN. IN NO EVENT WILL IK MULTIMEDIA BE LIABLE FOR ANY DIRECT, INDIRECT, SPECIAL, INCIDENTAL OR CONSEQUENTIAL DAMAGES RESULTING FROM ANY DEFECT IN THE PRODUCT, INCLUDING LOST PROFITS, DAMAGE TO PROPERTY AND, TO THE EXTENT PERMITTED BY LAW, DAMAGE FOR PERSONAL INJURY, EVEN IF IK MULTIMEDIA HAS BEEN ADVISED OF THE POSSIBILITY OF SUCH DAMAGES.

Some states/countries do not allow the exclusion of implied warranties or limitations on the duration of an implied warranty, so the above limitations may not apply to you. This warranty gives you specific legal rights. You may have other rights, which vary from state to state, country to country.

Service Policy

To obtain warranty service, you must:

- 1) Be the original consumer purchaser from an authorized dealer/reseller and register your IK product within fifteen (15) days of purchase.
- 2) Call the numbers below during the warranty period, to obtain a Return Authorization number and shipping instructions.

3) Ship the product as instructed to one of the addresses below (Do NOT send the product to your dealer), including the Product Return Form (included in this envelope) and a copy of your proof of purchase.

Europe

IK Multimedia Production Srl
Via dell'Industria, 46
41122 Modena
ITALY
Phone: +39 059 285496
Fax: +39 059 2861671

US, Canada, Central and South America

IK Multimedia US, LLC
1153 Sawgrass Corporate Pkwy.
Sunrise, FL 33323
Phone: (954) 846-9101
Fax: (954) 846-9077

Other Countries

Contact your Local Distributors at:
www.ikmultimedia.com/dealers
OR
Contact either the Europe or US office

4) IK Multimedia must be able to duplicate the related defect or problem at its facilities.

General Service Terms

General notes

All general terms of service are deemed as having been accepted by the user upon breaking the seal of the envelope containing StealthPedal software & registration codes.

Evidence of Warranty

A copy of the proof of purchase (sales receipt or invoice) must be provided as evidence of the validity of the warranty. All repairs will be invoiced if this is not observed.

Product Return Form

Any products shipped to IK Multimedia without a Return Authorization number will be refused and returned at your expense.

Description of the fault

If the Product Return Form is not fully and clearly completed, e.g., not accompanied with a description of the fault (“defective” or “repair required” will not be considered to be sufficient description), cannot be processed, and will be returned at your expense.

StealthPedal™ CS

Unjustified complaints

In the event of unjustified complaints, (no fault can be determined, apparent user error), we will return the product subject to a service charge.

Packaging

Ship the product in its original packaging. If it is not possible, please use sufficiently sturdy and well-padded packaging material. Due to the delicate nature of electronic components, it is suggested to restrict the movement of the product as much as possible. The use of inadequate packaging material and resulting shipping damage may void the warranty.

Note: Ensure the package has the complete address you are sending it to and adequate postage. If possible, use a traceable shipping service to confirm delivery of the product.

Third-Party products

Please avoid sending any products not manufactured by IK Multimedia. IK Multimedia is not responsible for any third-party products. Any third-party products will be returned at the customer's expense.

Shipping costs

The cost for shipping and insurance of the product to be repaired by IK Multimedia shall be borne by the sender. In the event of a warranty service the cost for returning the product will be borne by IK Multimedia.

Closing provisions

IK Multimedia reserves the right to modify or supplement these general terms of service at any time.

StealthPedal™ CS

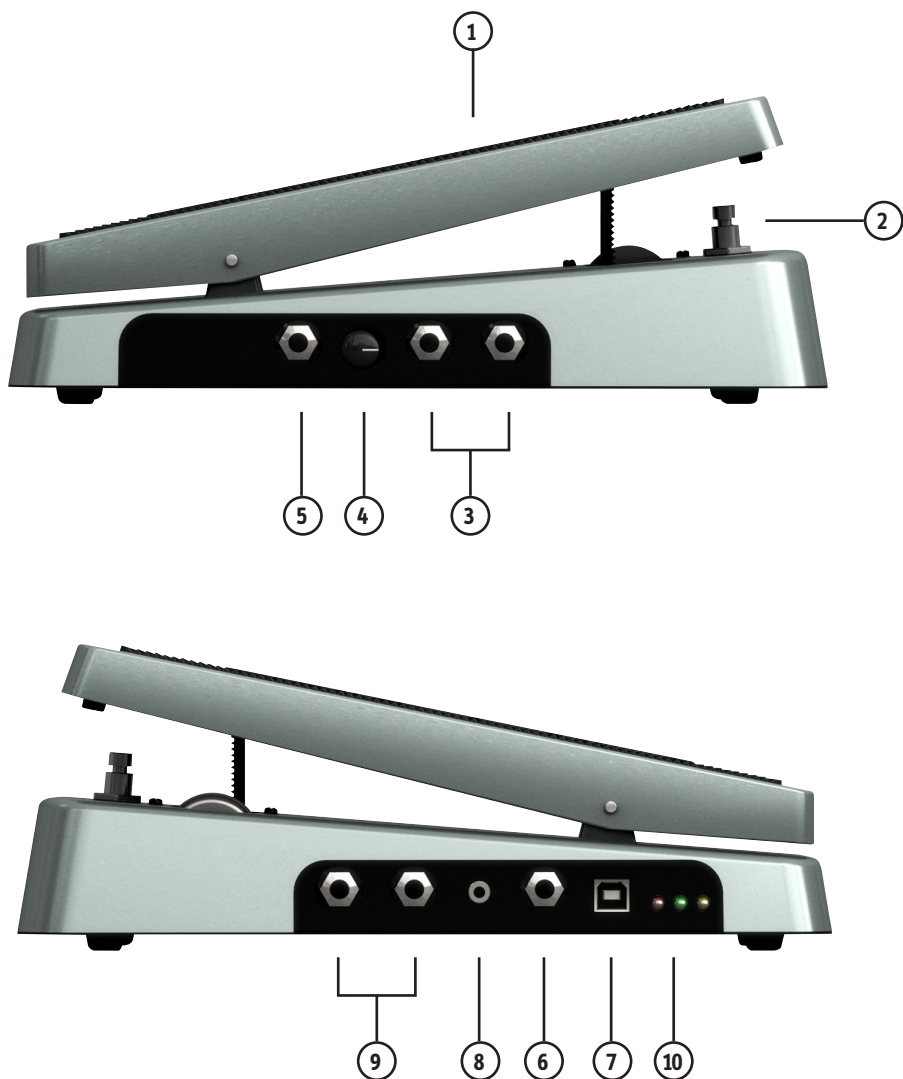


figure 2.1

Chapter 2 Getting Started With StealthPedal

2.1 StealthPedal Layout and Connections

- 1) **Expression Control:** this is the main continuous control available with your StealthPedal. It can be configured to control any of the parameters of AmpliTube models or to send standard MIDI control changes to any software.
- 2) **Built-in Switch:** configurable switch placed under StealthPedal Expression rocker.
- 3) **Hi-Z/Line IN L&R (1&2):** high quality BALANCED INSTRUMENT (Hi-Z) inputs that automatically switch to unbalanced when a regular 1/4" unbalanced guitar cord is connected, perfectly works with Guitar, Bass (passive or active) and Keyboards or any other audio device outputting unbalanced or balanced audio signals. Connect a regular 1/4" guitar cord for Hi-Z unbalanced usage or a 1/4" TRS when connecting to balanced lines.
- 4) **VOLUME/MIDI Control Knob:** adjusts the volume for Audio Outputs. Also can be used as a MIDI control when used with the included MIDI Control application, which disables its use as a volume control.
- 5) **External Expression Pedal:** connect an external expression to this jack by using a 1/4" TRS cable.
- 6) **External dual footswitch:** connect an external dual footswitch (or two separated footswitches) to this jack by using a 1/4" TRS cable. Note: you may use third-party expression or footswitch pedals or those available for purchase from IK Multimedia, made specifically for use with your StealthPedal.
- 7) **USB Host Computer Connector:** connect the included USB cable to this connector. The other side of the cable will be connected to the Mac or PC computer you will use with StealthPedal.
- 8) **PHONES Jack:** connect a pair of stereo headphones here. Volume is controlled by 4 (when used as a Volume control). Even when headphones are connected sound will still be present at the balanced/unbalanced output jacks.
- 9) **BALANCED/Unbalanced OUT:** high level balanced stereo output to connect StealthPedal to mixing desks, audio interfaces or amplifiers. This connection (when using a balanced TRS cable) will give a clean and noise free signal even when driving long cables in noisy environments (like live shows). Volume is controlled by 4 (when used as a Volume control).
- 10) **Status / Indication LEDs:** these three LEDs can show StealthPedal connection status, Audio level and Tuning.

2.2 StealthPedal Software Installation Introduction

StealthPedal system is a Hardware/Software combination. In order to use StealthPedal either live or in the studio you will need a Mac or PC computer (check Installation and Authorization manual for system requirements).

You need to install on your computer all software included with StealthPedal to get the best possible user experience. There are three main software components you need to install first to properly operate StealthPedal:

- **AmpliTube Software**
- **StealthPedal System Drivers** (will be automatically installed during the AmpliTube Software installation process)
- **StealthPedal MIDI Control Application** (refer to the StealthPedal MIDI Control User Manual)

2.3 AmpliTube and StealthPedal System Drivers Installation

To properly install the StealthPedal, please do not connect the StealthPedal unit to the computer until after following these few steps:

IMPORTANT: NEVER CONNECT THE STEALTHPEDAL TO AN INTERNAL OR EXTERNAL USB HUB. PLEASE ENSURE YOU ARE CONNECTING STEALTHPEDAL TO A DIRECT USB PORT ON YOUR COMPUTER (as an example on most desktop PCs you will need to use the USB ports on the back of the machine, not on the front as these are most probably connected to an internal hub).

For further reference on AmpliTube installation, please refer to Installation and Authorization manual.

Windows®:

1. DO NOT connect the StealthPedal to the computer yet.
2. Insert the Installer CD into your computer drive.
3. Double click the file named 'Install AmpliTube' to install, register and authorize the AmpliTube software and the necessary driver. Follow the on-screen steps, and connect StealthPedal to an available USB port after the installation process has finished.
4. Double click the file named 'Install StealthPedal MIDI Control' to install the StealthPedal MIDI Control software.
5. Load AmpliTube from: Start/Programs/IK Multimedia/AmpliTube.
6. Once loaded, click Settings > Audio Setup. Select ASIO and set Input and Output to StealthPedal.

Once the installation finishes you can connect your StealthPedal to your computer using the included USB cable (figure 2.2).



figure 2.2

Mac OS® X:

1. DO NOT connect the StealthPedal to the computer yet.
2. Insert the Installer CD into your computer drive.
3. Double click the file named 'Install AmpliTube' to install, register and authorize the AmpliTube software.
4. Double click the file named 'Install StealthPedal MIDI Control' to install the StealthPedal MIDI Control software.
5. No drivers are needed for the Mac; Simply connect StealthPedal to an available USB port.
6. Load AmpliTube from: /Applications/AmpliTube.
7. Once loaded, click Settings > Audio Setup. Select Input and Output drivers to StealthPedal.

Once the installation finishes you can connect your StealthPedal to your computer using the included USB cable (figure 2.2).

StealthPedal™ CS

2.7 StealthPedal Power On Check

StealthPedal is a USB Bus-Powered Device, and therefore needs no external power supply.

StealthPedal has no Power switch, it powers up as soon as it is connected to the computer USB port. The red LED indicator on the side of your StealthPedal (figure 2.3) will light up during device power up and operating system boot. The green LED (figure 2.4) will light up when the initialization will be completed, to indicate that your StealthPedal is ready to use.



figure 2.3



figure 2.4

If StealthPedal does not turn on please check that you have firmly inserted the included USB cable into both StealthPedal and the computer. Should the StealthPedal unit still refuse to power up please contact the IK Multimedia tech support service.

If your computer gives an error about too high current draw from the USB port you will have to use another port, directly connected to the computer main board and not, for example, on the USB keyboard.

If the StealthPedal red LED remains ON and does not switch to green, you need to install its drivers, or reinstall them if you have already done so.

2.8 The StealthPedal System Structure

This section explains how the StealthPedal system is structured and how its components interact with each other.

The StealthPedal system consists of the following components:

- StealthPedal USB Floor controller and audio interface.
- Mac or PC host computer (see Installation and Authorization Manual for system requirements).
- AmpliTube software installed on the Mac or PC computer.
- StealthPedal MIDI Control application.

StealthPedal is a USB Audio Interface and Controller specifically designed to control IK Multimedia “Powered By AmpliTube” software modeling processors. StealthPedal is designed to work in combination with a core software application called “AmpliTube” that runs on the host computer.

With StealthPedal you can go onstage comfortably, without heavy guitar amplifiers and stomp pedals. The StealthPedal system gives you access to hundreds of extremely accurate digital models of sought-after pieces of gear, with a convenient small footprint, all in one device. Bring onstage the sounds that you use in your productions, create custom controls for each Patch and lots more. Go in the studio and remotely control all of your favorite “Powered by AmpliTube” processors within the AmpliTube “shell”. You will be able to use StealthPedal as a remote controller for AmpliTube hosted by your favorite Digital Audio Workstation as well as a high quality ASIO or CoreAudio interface for your favorite DAW. Even if you don’t intend to use StealthPedal as an audio interface (because, for example, you’re using Pro Tools®) you can still use the StealthPedal as a flexible MIDI controller for your software application(s), or for controlling AmpliTube as a plugin within your DAW (Digital Audio Workstation).

AmpliTube performs the following tasks:

- Provides audio input - output from and to StealthPedal.
- Provides Control Mapping for your StealthPedal for use with “Powered by AmpliTube” software (for non-“Powered by AmpliTube” software, please use the MIDI control application).

2.9 Windows Control Panel

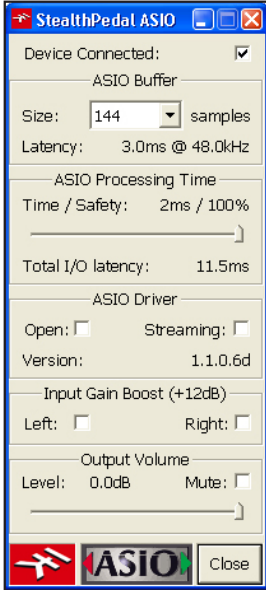


figure 2.5

In order to open the Control Panel (figure 2.5), click on the “StealthPedal icon” located in the Windows tray, (please check the Windows taskbar, usually located at the bottom next to the clock).

Control Panel description:

ASIO Buffer Size: sets the StealthPedal’s input/output latency. The smaller the buffer size value is, the faster the response.

IMPORTANT: too small a buffer size may introduce audio pop and click noises or CPU overload. Reliable operation highly depends on the performance and configuration of your system. Also, if there is an open audio application that is using the StealthPedal’s ASIO driver, you will not be able to change the buffer size value from the StealthPedal’s Control Panel. In this case, you will need to either:

- close the application before you modify the buffer size or
- open the StealthPedal Control Panel from within the Audio Application settings by clicking on the button that is usually named “Control Panel”.

ASIO Processing Time: adjusts the processing time of the internal ASIO driver. The higher the value, the more reliable the system will be in terms of audio quality at the expense of a slightly higher latency. Lower values will further reduce latency but will increase the ASIO driver CPU load, this could create audio pops and clicks at extreme settings.

ASIO Driver: there are two options available: ‘Open’ and ‘Steaming’.

Open: ASIO driver is opened by an ASIO host application. This means that the driver cannot be accessed by another ASIO host at the same time.

Streaming: ASIO driver is streaming audio data between ASIO host and hardware device. This means that USB bandwidth has been allocated for the input and output audio streams.

Input Gain Boost: when checked boosts the StealthPedal input sensitivity by 12dB. Depending on the instrument you’re using set this option so that you get an input signal that is as high as possible without overloading or clipping.

Output Volume: controls the audio output volume of StealthPedal.

2.10 Mac Control Panel

On the Mac you can conveniently control your StealthPedal from the “Sound” System Preferences. Open the “Audio MIDI Setup” (Applications > Utilities) and select the StealthPedal device to adjust the its audio settings and parameters (figure 2.6).

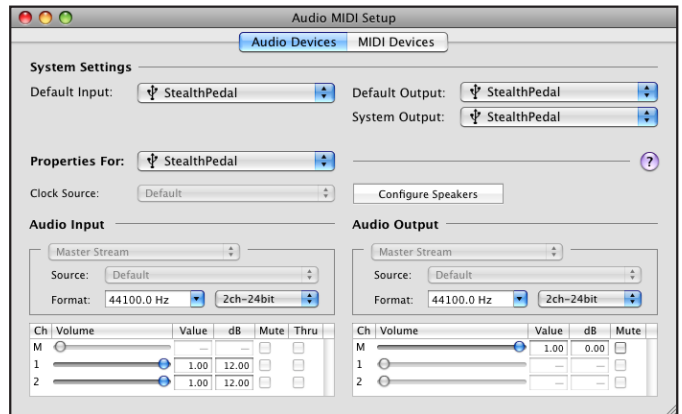


figure 2.6

Control Panel description:

Audio Input Volume: these sliders set the input gain for inputs 1 and 2 (L and R). Values between 0 and 6 dB will give a fixed gain of 0dB, values between 7 and 12 dB will result in a fixed gain of +12 dB.

Audio Output Volume: this slider sets the audio output volume for outputs 1 & 2 (L / R) and headphones.

Audio Output Format: sets the output frequency for StealthPedal. 32 kHz - 48 kHz are supported, all at 24 bit. **Please note: the input and output frequency controls are tied together-any changes to input frequency are ignored!**

Note: latency Settings in Mac OS X are controlled by host applications. Please make any latency adjustments within the chosen application.

2.11 StealthPedal Control Assignment

StealthPedal has five controls (continuous ones and switches) that can be assigned to parameters on your preferred applications (figure 2.7 and 2.8):

- StealthPedal Expression
- StealthPedal Switch
- StealthPedal Volume
- Optional Switch (One and Two)
- Optional Expression



figure 2.7

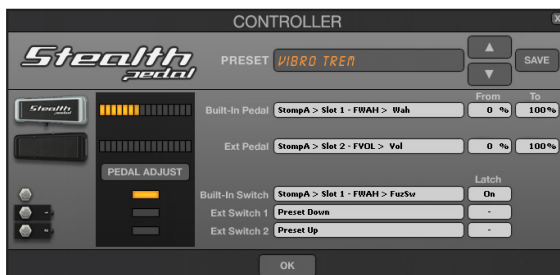


figure 2.8

To assign these controls, please refer to the following User Manuals:

- For “Powered By AmpliTube Products”: AmpliTube User Manual.
- For other MIDI-Controllable applications: StealthPedal MIDI Control User Manual.

Both of these User Manuals can be located on your StealthPedal installation disc.

2.12 Playing StealthPedal For The First Time With AmpliTube

Now that you have completed installing and connecting StealthPedal, and all required software is installed, let's play! Plug in StealthPedal, go to your applications (or programs) menu and launch "AmpliTube".

Open AmpliTube Audio MIDI setup window (figure 2.9) and select StealthPedal as your audio interface, and you'll be ready to go.

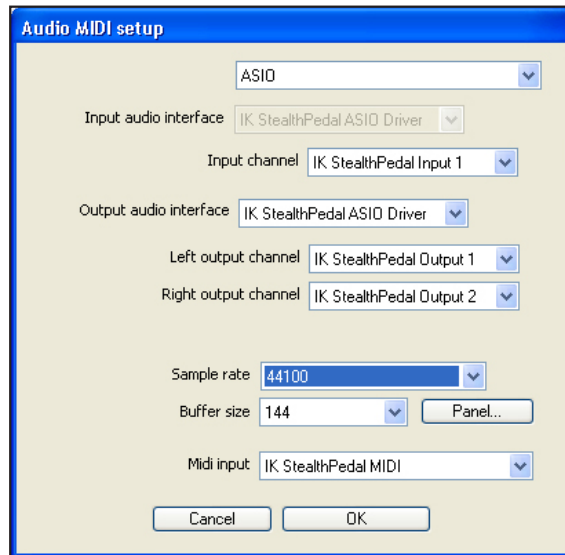


figure 2.9



figure 2.10

If you want to control AmpliTube parameter with StealthPedal controls, select the StealthPedal device on the top right corner of the AmpliTube interface and click the ON button right close to it (figure 2.10).

For additional information on how to setup AmpliTube check the AmpliTube User Manual.

The AmpliTube default audio settings are optimized for low latency and good performance. The default audio settings for the StealthPedal audio interface are:

- **Windows:** 144 samples buffer-size, 48 kHz sampling rate.
- **Mac:** 128 samples buffers-size, 48 kHz sampling rate.

On most computers, these settings will deliver the optimal compromise between low latency and great reliability. However, if you would like to

StealthPedal™ CS

change these settings in AmpliTube standalone, select:
Settings > Audio MIDI setup.

If you experience audio pops or clicks while playing, try increasing the buffer-size value to the next higher step. If your computer is very powerful and the 144 or 128 value is working perfectly, you may even try setting this value to 96 (Windows only) or 64 (Mac only) for an even faster response. However, this is not advisable on many older and/or slower computers and should not be used as a standard setting for live shows unless you can extensively test for your audio signal to be clean and free from clicks and pops beforehand.

Chapter 3 Typical StealthPedal Setups and Connections

The following paragraphs explain how to connect StealthPedal in most common live or studio situations.

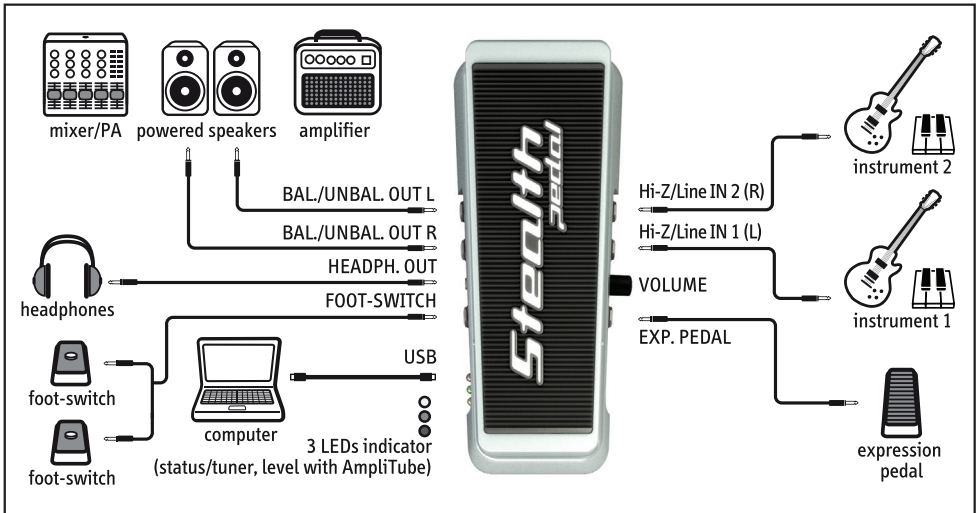


figure 3.1

StealthPedal™ CS

3.1 Using StealthPedal in a Home Studio

Outputs

With StealthPedal you can set up a home studio with quality comparable to many pro-quality studio environments. When playing in a home studio with StealthPedal, one usually will plug the unit into a pair of studio speakers, commonly referred to as “Studio Monitors” (figure 3.2). For best results it is advisable (when possible) to connect StealthPedal to your Studio Monitors with balanced 1/4” TRS cables. This will help minimize noise and lead to the most enjoyable listening experience possible. Please check to see if your Studio Monitors are capable of receiving a balanced (TRS) cable. If not, you can use unbalanced (TS) cables. It is not strictly necessary to connect StealthPedal to a mixer or monitor-controller because a convenient Volume control is already present on the unit. You can also connect headphones to your StealthPedal by using the 1/8” Phones jack.

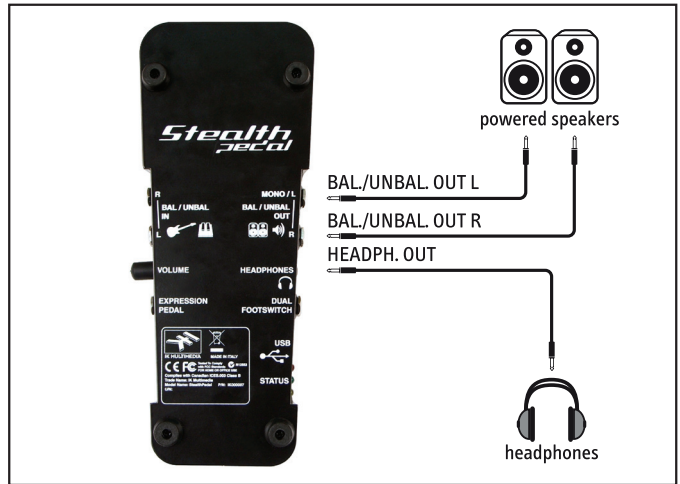


figure 3.2

Inputs

Connect your instruments here (figure 3.3). When you need to connect only one mono instrument (guitar, bass etc..) use input #1 (L). For optimum signal quality, please use high-quality cables. These are balanced high quality Hi-Z inputs that automatically switch to unbalanced when a 1/4" unbalanced cord is plugged, perfect for low-level unbalanced signals (like the one from an electric guitar or a bass, passive or active). When connecting a 1/4" balanced (TRS) cord the input is actively balanced and is perfect to connect any line-level balanced output audio device to the StealthPedal.

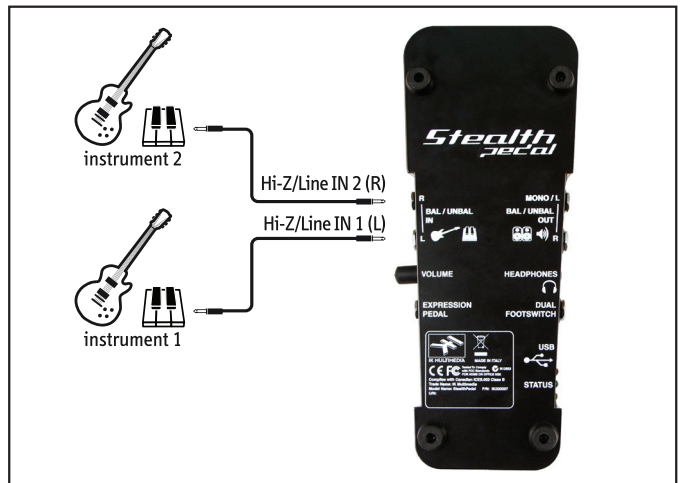


figure 3.3

StealthPedal™ CS

3.2 Using StealthPedal On-stage Direct to The PA System

Outputs

With StealthPedal you can play on-stage without heavy amps and cabinets, feeding your processed mono or stereo signal directly to the PA system (figure 3.4). StealthPedal's balanced outputs are capable of driving long cables without noise (if the inputs on the receiving side are balanced). Also use these connections when you are sending your signals to the monitor mixer, if you are hearing yourself with wedges or with in-ear monitors. The PA engineers will then split the signals to be sent to the front of house mixer. You don't need any D.I. boxes because the StealthPedal balanced outputs are designed to be connected directly to your mixer or PA system.

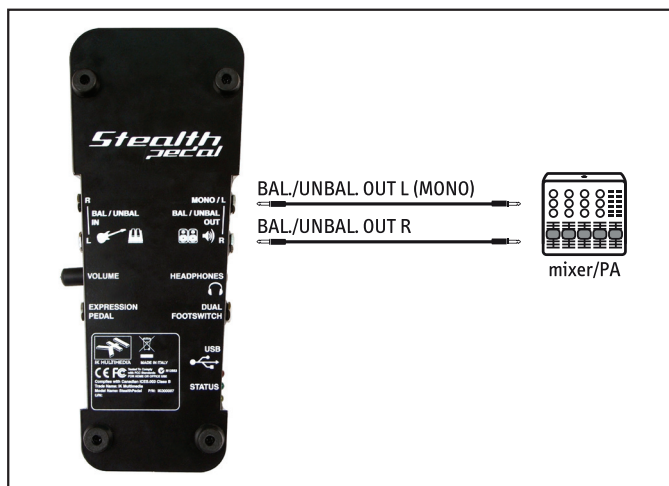


figure 3.4

Inputs

Connect your instruments here (figure 3.5). When you need to connect only one mono instrument (guitar, bass etc..) use input #1 (L). For optimum signal quality, please use high-quality cables. These are balanced high quality Hi-Z inputs that automatically switch to unbalanced when a 1/4" unbalanced cord is plugged, perfect for low-level unbalanced signals (like the one from an electric guitar or a bass, passive or active). When connecting a 1/4" balanced (TRS) cord the input is actively balanced and is perfect to connect any line-level balanced output audio device to the StealthPedal.

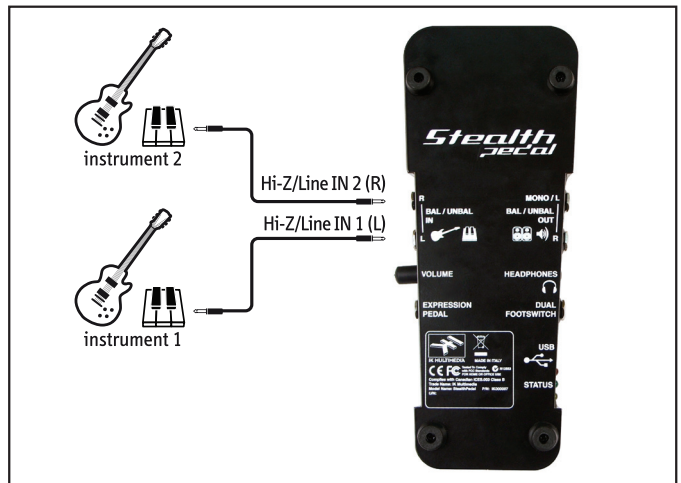


figure 3.5

3.3 Using StealthPedal On-stage With One or More Guitar Cabinets

Outputs

With StealthPedal you can play live without amps and cabinets, but if you prefer using real guitar cabinets you can do that easily as well by using a mono (or stereo if you have two cabinets or a stereo one) power amp (figure 3.6). We recommend using a tube-based power amplifier designed specifically for guitar or bass as this will preserve the tone of AmpliTube better than solid-state power amplifiers. However, solid-state amps will work without problems and may be used as well.

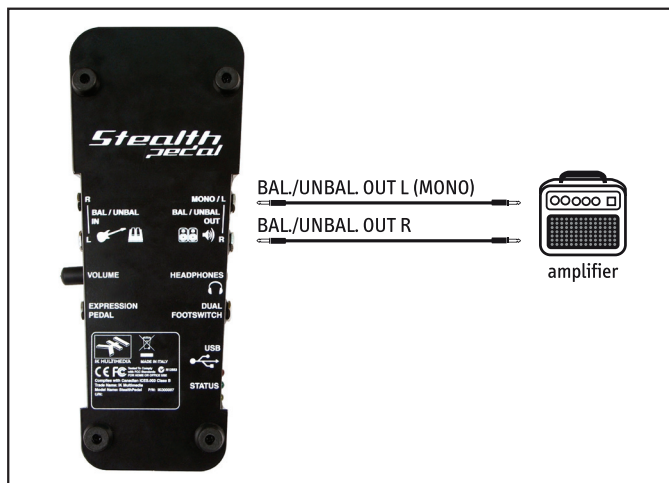


figure 3.6

Inputs

Connect your instruments here (figure 3.7). When you need to connect only one mono instrument (guitar, bass etc..) use input #1 (L). For optimum signal quality, please use high-quality cables. These are balanced high quality Hi-Z inputs that automatically switch to unbalanced when a 1/4" unbalanced cord is plugged, perfect for low-level unbalanced signals (like the one from an electric guitar or a bass, passive or active). When connecting a 1/4" balanced (TRS) cord the input is actively balanced and is perfect to connect any line-level balanced output audio device to the StealthPedal.

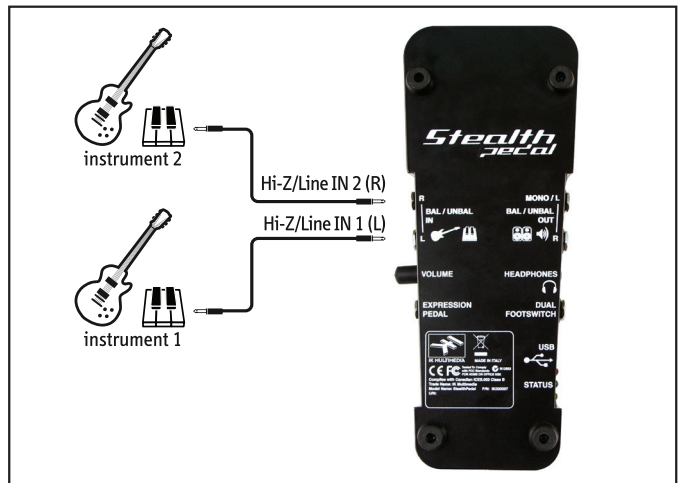


figure 3.7

StealthPedal™ CS

3.4 Connecting External Expression Pedal and Double Footswitch

To extend StealthPedal control capabilities you can connect an External Expression Pedal and an External Dual Footswitch (figure 3.8).

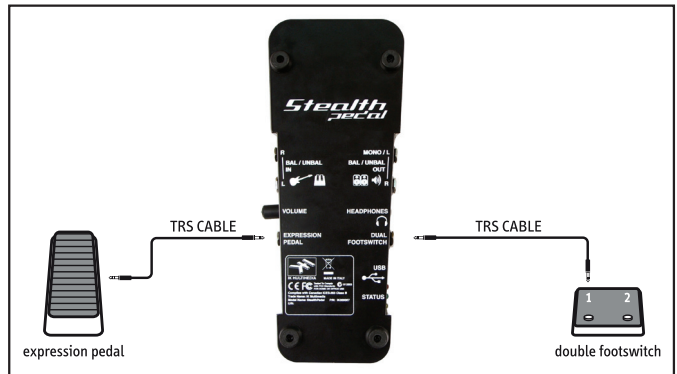


figure 3.8

External Expression Pedal

You can connect an external Expression Pedal to the Expression Pedal 1/4" TRS Jack (figure 3.9).

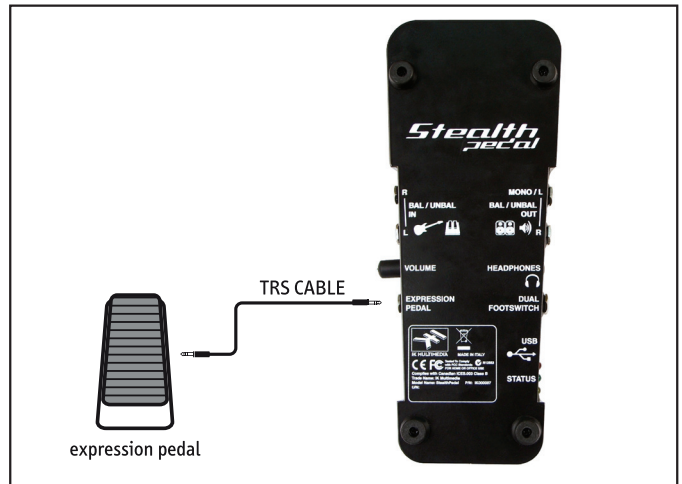


figure 3.9

Note: You may use a third-party Expression Pedal or the one available for purchase from IK Multimedia, made specifically for use with your StealthPedal (figure 3.10).



figure 3.10

Be sure to use a 1/4" TRS cable (or "stereo" jack) when connecting the Expression Pedal to StealthPedal. A conveniently short 1/4" TRS cable is included in the box with the Expression Pedal you can purchase from IK Multimedia.

WARNING: do NOT connect an Expression Pedal with a TS cable (or "mono" jack). Connecting an Expression Pedal with a TS cable (or "mono" jack) will NOT work.

StealthPedal™ CS

External Dual Footswitch

You can connect an external Dual Footswitch to the Dual Footswitch 1/4" TRS Jack (figure 3.11).

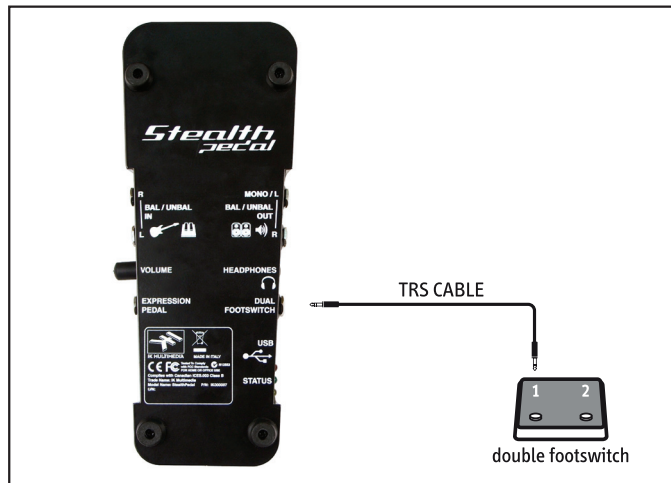


figure 3.11

Note: You may use a third-party Dual Footswitch or two Single Footswitches, or the one available for purchase from IK Multimedia, made specifically for use with your StealthPedal (figure 3.12).



figure 3.12

If you use the IK Multimedia Dual Footswitch you will just need a single, 1/4" TRS (or "stereo" jack) to connect the Dual Footswitch to StealthPedal.

Connect output "1" of the IK Multimedia Dual Footswitch to "Dual Footswitch"

jack on StealthPedal.

When connecting IK Multimedia Double Footswitch with a 1/4" TRS cable only output #1 has to be used as both switches signal is carried by this jack. Output #2 will remain unconnected.

A conveniently short 1/4" TRS cable is included in the box with the Dual Footswitch you can purchase from IK Multimedia.

If you use a third-party Dual Footswitch or two separated Footswitches please follow the StealthPedal TRS Dual Footswitch wiring (figure 3.11).

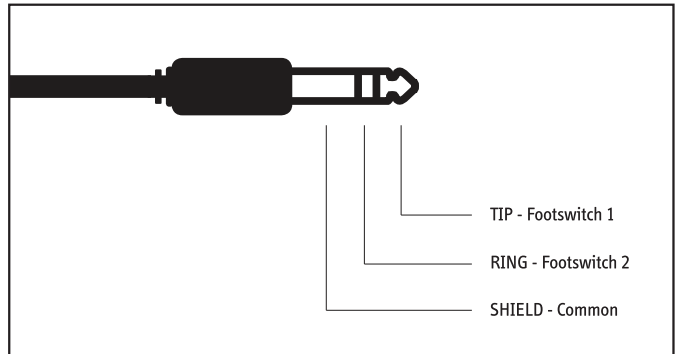


figure 3.11

Note: if you use a third party single Footswitch you can connect it by using its regular 1/4" TS connector, in this case you'll only be able to use External Footswitch #1 to control your software parameters.

StealthPedal™ CS

Chapter 4 Technical Specifications

GENERAL	
Sampling Rates	48.0 kHz, 44.1 kHz, 32.0 kHz
Bit Depth	24-bit I/O
Power Supply	USB self-powered
Power Consumption	2.5W (500mA at 5V) maximum
USB 1.1 Full Speed	2 In / 2 Out, 24-bit, 32kHz - 48kHz Audio Streams + Interface I/O

INSTRUMENT INPUTS (2)	
Type	High impedance, balanced, low noise preamp input
Maximum Level	Low Gain: +12.3dBu / 9.0Vpp, Bal. / Unbalanced (0dBFS, < 0.005% THD) High Gain: +0.4dBu / 2.3Vpp, Bal. / Unbalanced (0dBFS, < 0.005% THD)
Input Impedance	1MΩ
Frequency Response	+/-0.2dB, 20Hz - 20kHz
SNR	105dBA / 101dB RMS, 22kHz BW, +12.2dBu reference
THD + N	0.005%, 22kHz BW, 1kHz at +9.3dBu (-3dBFS)
IMD	0.006%, 60Hz/7kHz 4:1 at +9.3dBu (-3dBFS)
Stereo Crosstalk	Low Gain: -105dB High Gain: -95dB

BALANCED LINE OUTPUTS (2)	
Maximum Level	+19.1dBu Balanced (0dBFS, Volume at Max), < 0.001% THD +13.1dBu Unbalanced (0dBFS, Volume at Max), < 0.001% THD
Output Impedance	330Ω
Frequency Response	+/-0.1dB, 20Hz - 20kHz
SNR	109dBA / 108dB RMS, 22kHz BW, +19.0dBu reference
THD + N	0.002%, 22kHz BW, 1kHz at +16.1dBu (-3dBFS)
IMD	0.003%, 250Hz/8.02kHz 4:1 at +16.1dBu (-3dBFS)
Stereo Crosstalk	-108dB

StealthPedal™ CS

HEADPHONES STEREO OUTPUT	
Maximum Level	+13.0dBu (0dBFS, Volume at Max), < 0.001% THD, 1k Ω load
Maximum Power	100mW (50mW / channel)
Output Impedance	47 Ω
Frequency Response	+/-0.1dB, 20Hz - 20kHz
SNR	107dBA / 103dB RMS, 22kHz BW, +6dBV reference
THD + N	600 Ω load: 0.001%, 22kHz BW, 1kHz at +10.0dBV 33 Ω load: 0.003%, 22kHz BW, 1kHz at +2.6dBV
IMD	600 Ω load: 0.002%, 250Hz/8.02kHz 4:1 at +10.0dBV 33 Ω load: 0.007%, 250Hz/8.02kHz 4:1 at +2.6dBV
Stereo Crosstalk	-98dB (1kHz at +10.7dBV, 1 kohm load) -83dB (1kHz at +10.0dBV, 600 ohm load) -74dB (1kHz at +2.6dBV, 33 ohm load)

BUILT-IN CONTROLLERS	
Type	1 x Expression Pedal 1 x Footswitch 1 x Potentiometer (volume control / generic controller)

EXTERNAL CONTROLLER INPUT	
Type	1 x Expression Pedal / Footswitch Input
Connector	1/4in (3.5mm) TRS (Tip-Ring-Sleeve)
Pin Layout	Tip: Input signal Ring: 3.3V output Sleeve: 0V (GND)

EXTERNAL DUAL FOOTSWITCH INPUT	
Type	2 x Footswitch Inputs
Connector	1/4in (3.5mm) TRS (Tip-Ring-Sleeve)
Pin Layout	Tip: Foot-switch 1 input Ring: Foot-switch 2 input Sleeve: 0V (GND)

STATUS INDICATOR	
Type	3 LEDs

StealthPedal™ and AmpliTube® are trademarks or registered trademarks property of IK Multimedia Production Srl. All other product names and trademarks are the property of their respective owners, which are in no way associated or affiliated with IK Multimedia. Product names are used solely for the purpose of identifying the specific products that were studied during IK Multimedia's sound model development and for describing certain types of tones produced with IK Multimedia's digital modeling technology. Use of these names does not imply any cooperation or endorsement. Mac and the Mac logo are trademarks of Apple Computer, Inc., registered in the U.S. and other countries. Windows and the Windows logo are trademarks or registered trademarks of Microsoft Corporation in the United States and/or other countries. QuickTime and the QuickTime logo are trademarks or registered trademarks of Apple Computer, Inc., used under license therefrom.

www.stealthpedal.com

IK Multimedia Production, Via dell'industria 46, 41122, Modena, Italy.

Phone: +39-059-285496 - Fax: +39-059-2861671

IK Multimedia US LLC, 1153 Sawgrass Corporate Pkwy. Sunrise, FL 33323

Phone: (954) 846-9101 - Fax: (954) 846-9077

www.ikmultimedia.com

All specifications are subject to change without further notice.

IK Multimedia. Musicians First.

